


UAMS ssid Wireless Network settings for Non-UAMS Windows 7 devices,
or Windows 7 devices not attached to the UAMS Domain

For ease of installation and setup:

- Ensure you are in an area that has UAMS Wireless access.
- Ensure that the Laptop's wireless card is enabled and powered on

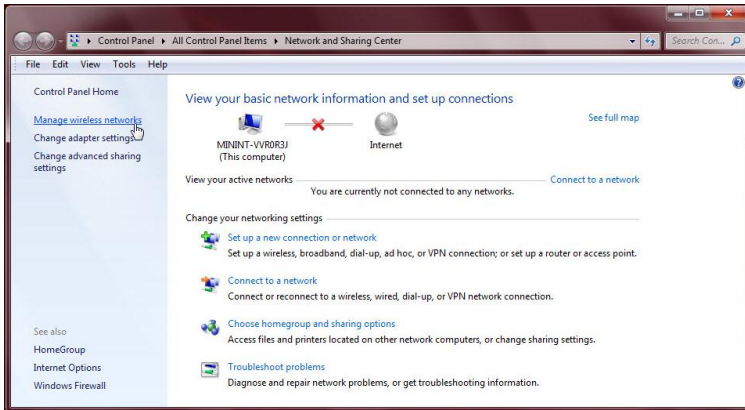
Client setup for the UAMS ssid Wireless Network



Left click on the *Wireless icon* 
in the Systray.

Now Left click
Open Network and Sharing Center.

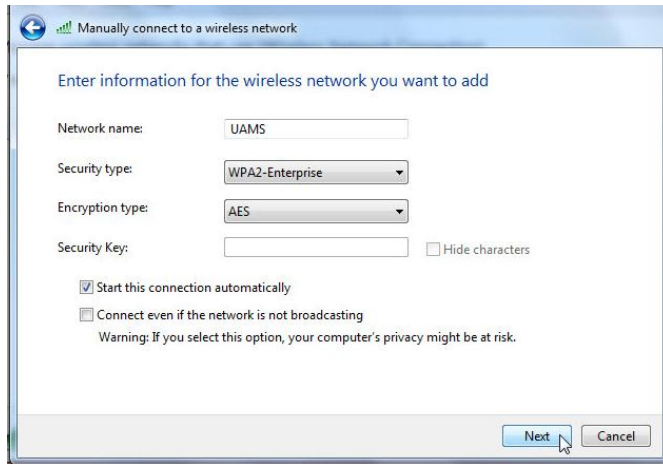
Left click on *Manage wireless networks.*



Left click the **ADD** tab.



Left click **Manually create a network profile** tab.



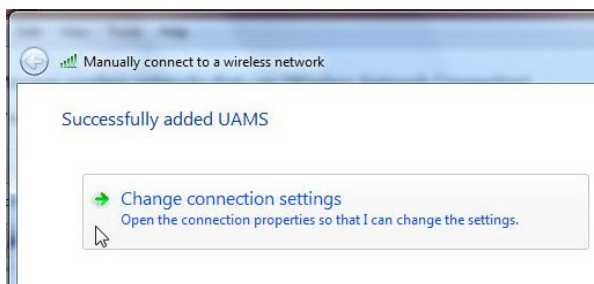
In the field next to **Network name:** enter UAMS (this must be entered all in Caps).

Set the following options:

Network Authentication: WPA2-Enterprise

Data encryption: AES

Then Left click the **Next** tab.

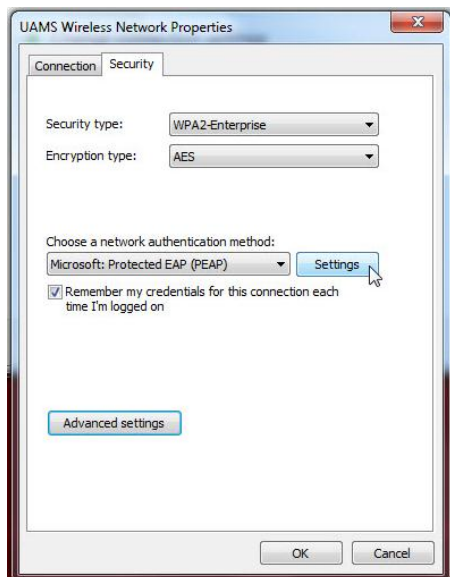
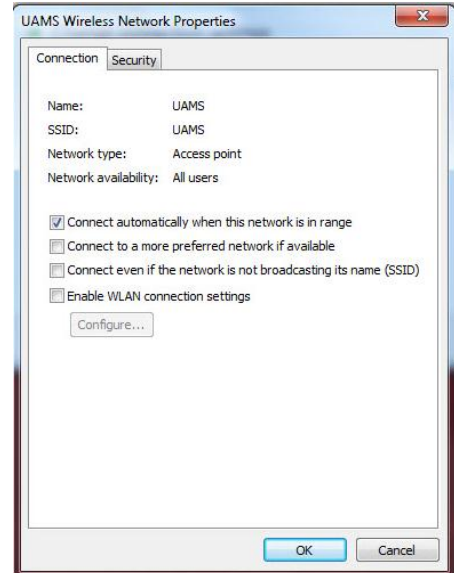


You should see **"Successfully added UAMS"**

Now Left click the **Change connection settings** tab.

In the *UAMS Wireless Network Properties* window under *Connections* tab, check the box for *Connect when this network is in range*

Now Left click the *Security* tab.



Under *Security* tab verify the following options settings:

Security type: WPA2-Enterprise

Encryption type: AES

*Choose a network authentication method:
Microsoft: Protected EAP (PEAP)*

check the box for *Remember my credentials for this connection each time I'm logged on*

Now Left click the *Settings* tab

Now uncheck the box for *Validate server certificate*

Ensure the checkbox for *Enable Fast Reconnect* is checked.

Ensure that under *Select Authentication Method:* *Secured password (EAP-MACHAP v2)* is selected.

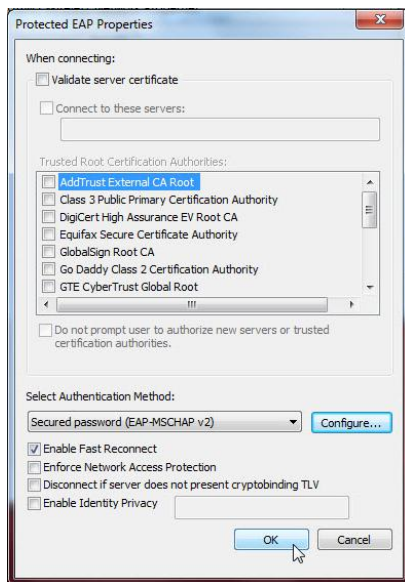
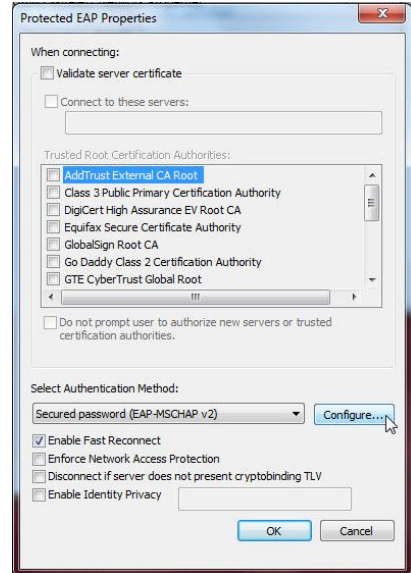
Now Left click the *Configure...* tab

In the *EAP MSCHAPv2 Properties* window uncheck the box for *Automatically use my Windows logon name and password (and domain if any)*

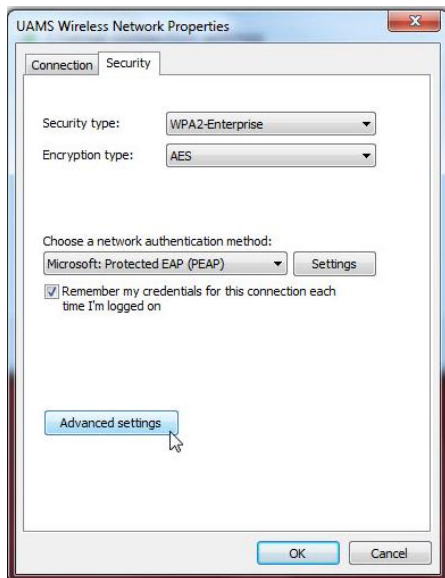


Now Left click the *OK* tab.

Now Left click the *OK* tab on the *Protected EAP Properties* window



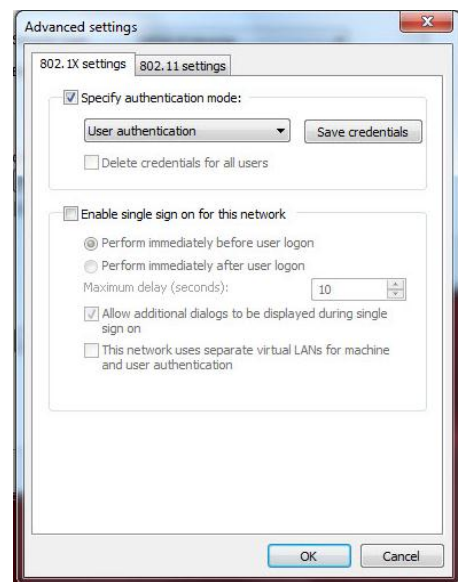
In the *UAMS Wireless Network Properties* window
Left click *Advanced settings* tab,



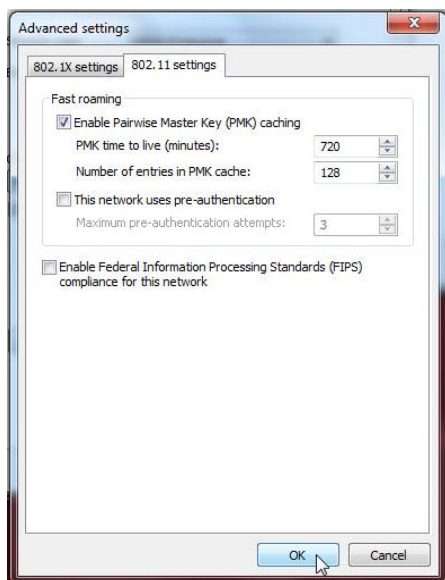
In the *Advanced settings* window
under the *802.1X settings* tab
set the following options settings:

check the box for *Specify Authentication mode:*

Select *User authentication* in
the dropdown box.



Optional Setting
By Left clicking the *Save Credentials* you can enter your user name and password which will be entered automatically when whenever you connect *UAMS* ssid.



In the *Advanced settings* window
under the *802.11 settings* tab,
ensure the following options set
Fast roaming :

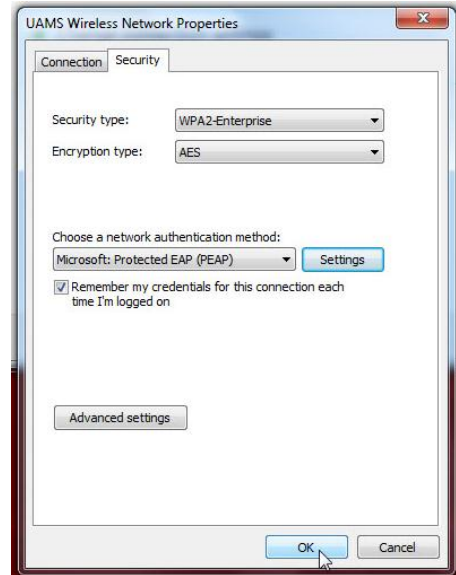
The checkbox for *Enable Pairwise Master Key (PMK) caching* is checked.

PMK time to live (minutes): 702

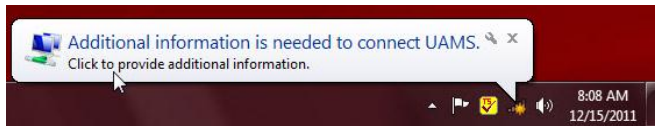
Number of entries in PMK cache: 128

Now Left click the *OK* tab on the *Advanced settings* window

Now Left click the **OK** tab on the **UAMS Wireless Network Properties** window



You should see the **Additional information is needed...** popup appear.



Left click on the popup.

Enter the following information in the **Windows Security – Network Authentication** window



DO NOT ENTER UAMS/ before the User name

User name: Your UAMS domain login - lastfirstm

Password: Your UAMS domain password

Now Left click the Wireless network icon



In the UAMS network tab you will see **Connected**

You are now connected to the UAMS Wireless Network.

